

Construction News

Congregation B'nai Jehoshua Beth Elohim

July 2009

Volume 2, Issue 7

Special Points Of Interest:

- Town Center Floor Slab has Been Placed.
- Slate Tile & Zinc Wall Panels are Being Installed.
- Ceiling Framing and Interior Finish-Out Continues.
- Access Road is Complete.

Shifting Gears

With the major structural components of the new synagogue now in place, we are beginning to “Shift Gears” and concentrate on the interior finishes and buildout.

July saw the completion of the floor slabs (minus the Sanctuary), exterior canopy framing, metal decking and the final phase of the roofing assembly.

We will continue working on the exterior finishes throughout the duration of the project (glass assemblies, metal wall panels, slate installation, architectural details, etc) but our primary focus will be finishing the interior spaces.

We are well on our way throughout the Admin & Pre-K areas. This includes ceiling framing, painting, and floor finishes (floor prep slated to begin mid-August).

The Sacred Hall is progressing rapidly with installation of drywall / taping of the perimeter walls, MEP rough-in and framing of the ceiling coffers / soffits.

Now that the slab has been placed throughout the Town

Center, we are working on framing the walls / ceiling soffits and installing the MEP systems within the ceiling cavity.

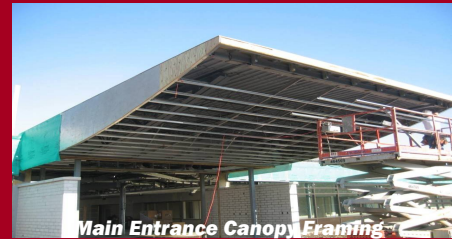
Most of the interior finishes are on order and many will start being installed shortly. The 6” x24” Realstone pre-cut accent wall paneling throughout the Town Center / Sanctuary radius wall will begin being installed the second week of August.

Ceramic wall and floor tile throughout the Kitchen has been placed. The majority of the finish paint colors have been selected and most of the flooring is staged in a warehouse and ready to be installed.

We also completed the CJHS / BJBE access road. Please note this road is to be used exclusively by BJBE and their visitors. Through traffic for the Business Park is not permitted.



Progress Photographs



END QUOTE

“Envisioning the end is enough to put the means in motion.”

-Dorothea Brande

